

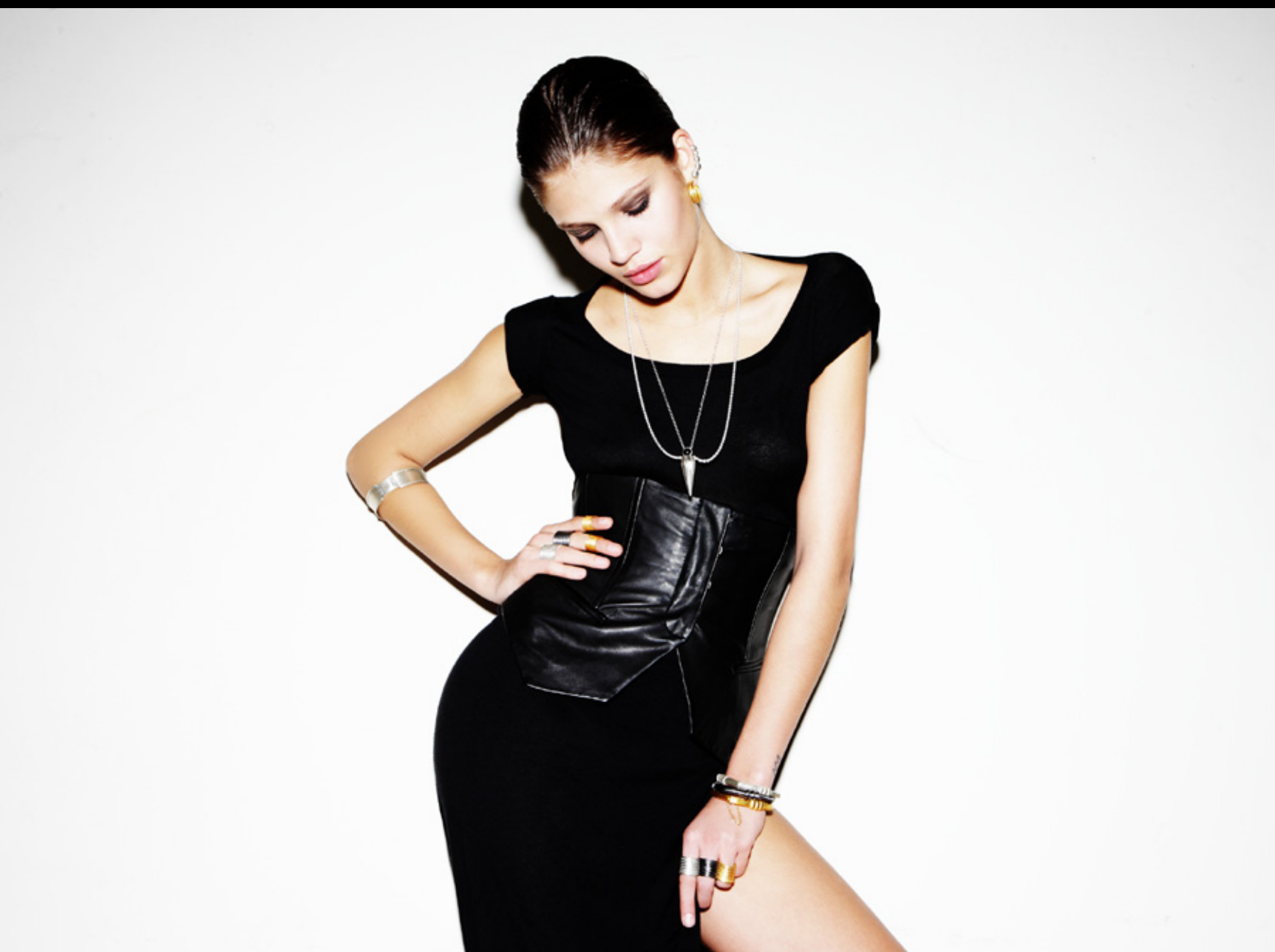
Photography by DEAN
DODOS; Styling by DELFINA
PINARDI; Art direction:
JAMES TIMMINS; Jewellery
designer: HANNAH WARNER;
Models: CHARLOTTE CARTER-
ALLEN & MILA DE WIT.



HANNAH
WARNER

hW

JEWELLERY COLLECTION 2011



HANNAH WARNER presents an eclectic collection, drawing inspiration from the ancient jewels of Turkey, Greece and Egypt, as well as various influences from tribal Africa.

"It was essential I conveyed a true essence of history and antique artifact throughout these pieces, whilst maintaining a clean modern fashion aesthetic", explains Hannah. "Much of this collection focus' on surface decoration, whether that be through engravings, contrasting rough and smooth surfaces or paisley finishes. "

The collection comprises of rings, bangles, earrings and necklaces, as well as new items incorporating secret compartments, stackable rings, and both cut and uncut stones. All pieces are available in oxidized silver, gold and black rhodium.

CONTACT

jewellery@hannahwarner.com
hw@hannahwarner.com
www.hannahwarner.com

PRESS

Jules Smee at MLPR
+44 (0)208 537 0011
+44 (0)7951 249 856
www.mlpr.co.uk