

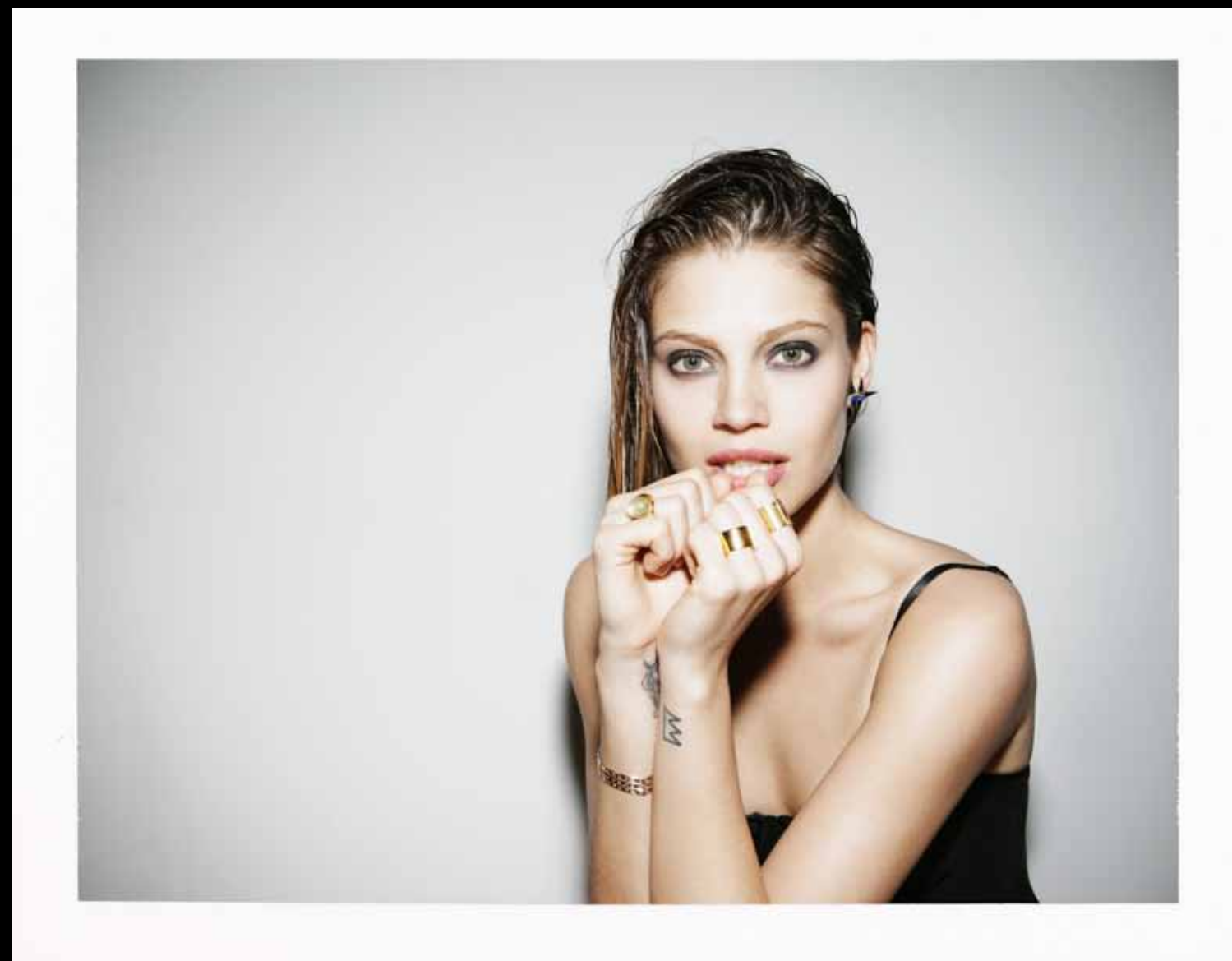
A close-up portrait of a woman with long, dark, wet hair. She is looking directly at the camera with a slight smile. Her hair is dripping with water, and some strands are falling over her face. She is wearing a large, ornate earring on her left ear and a wide, multi-strapped ring on her right hand. The background is a plain, light color.

hW

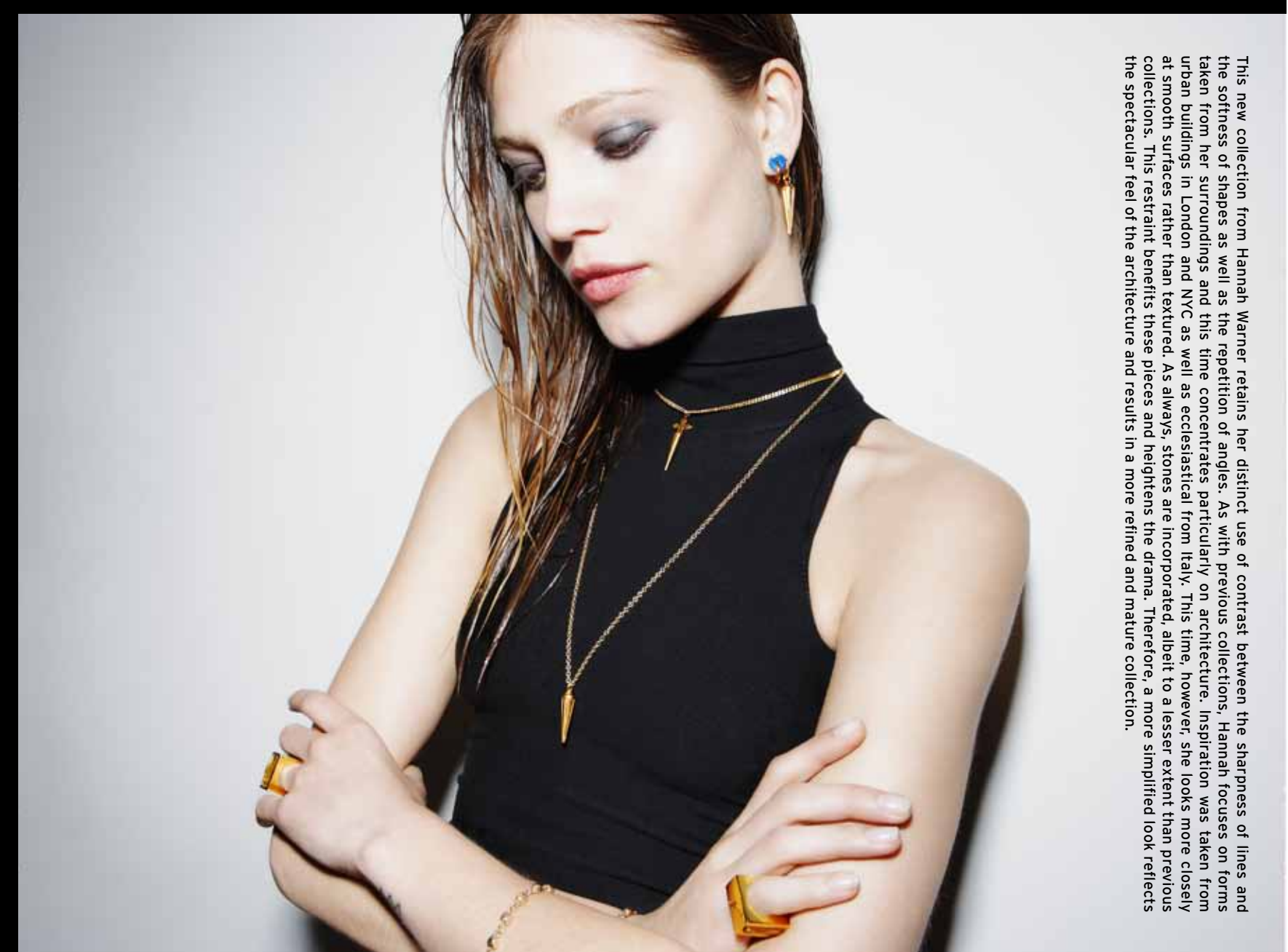
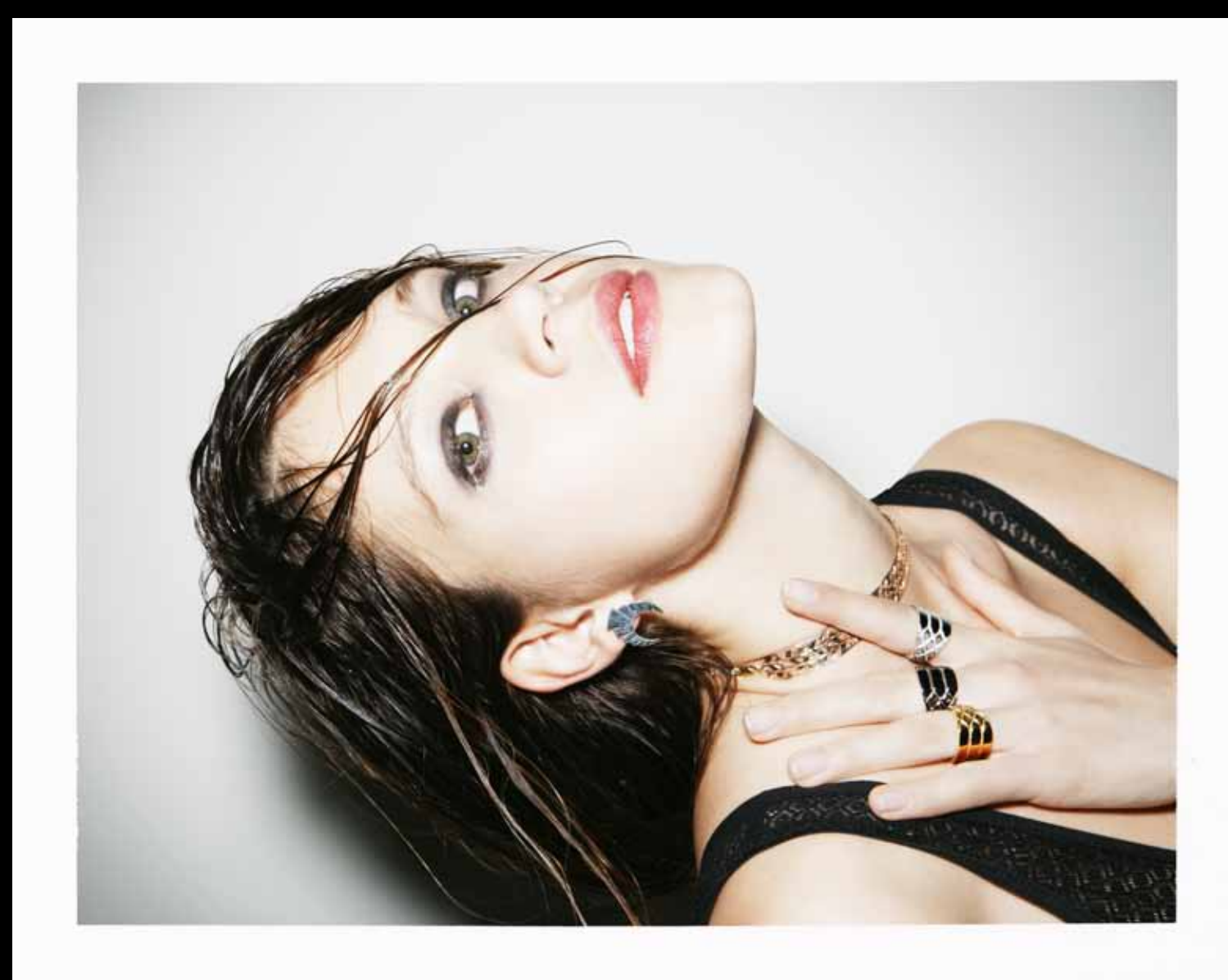
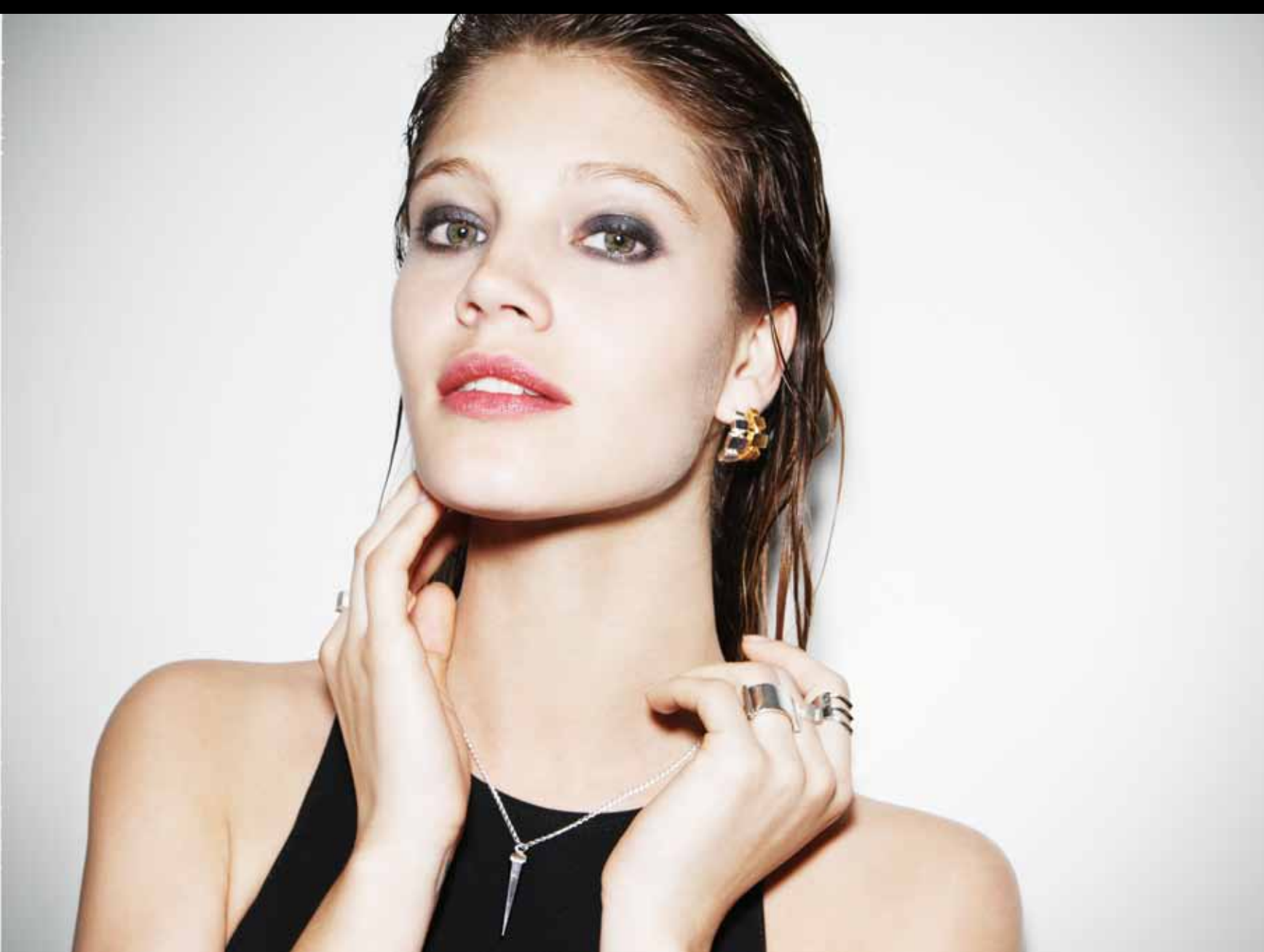
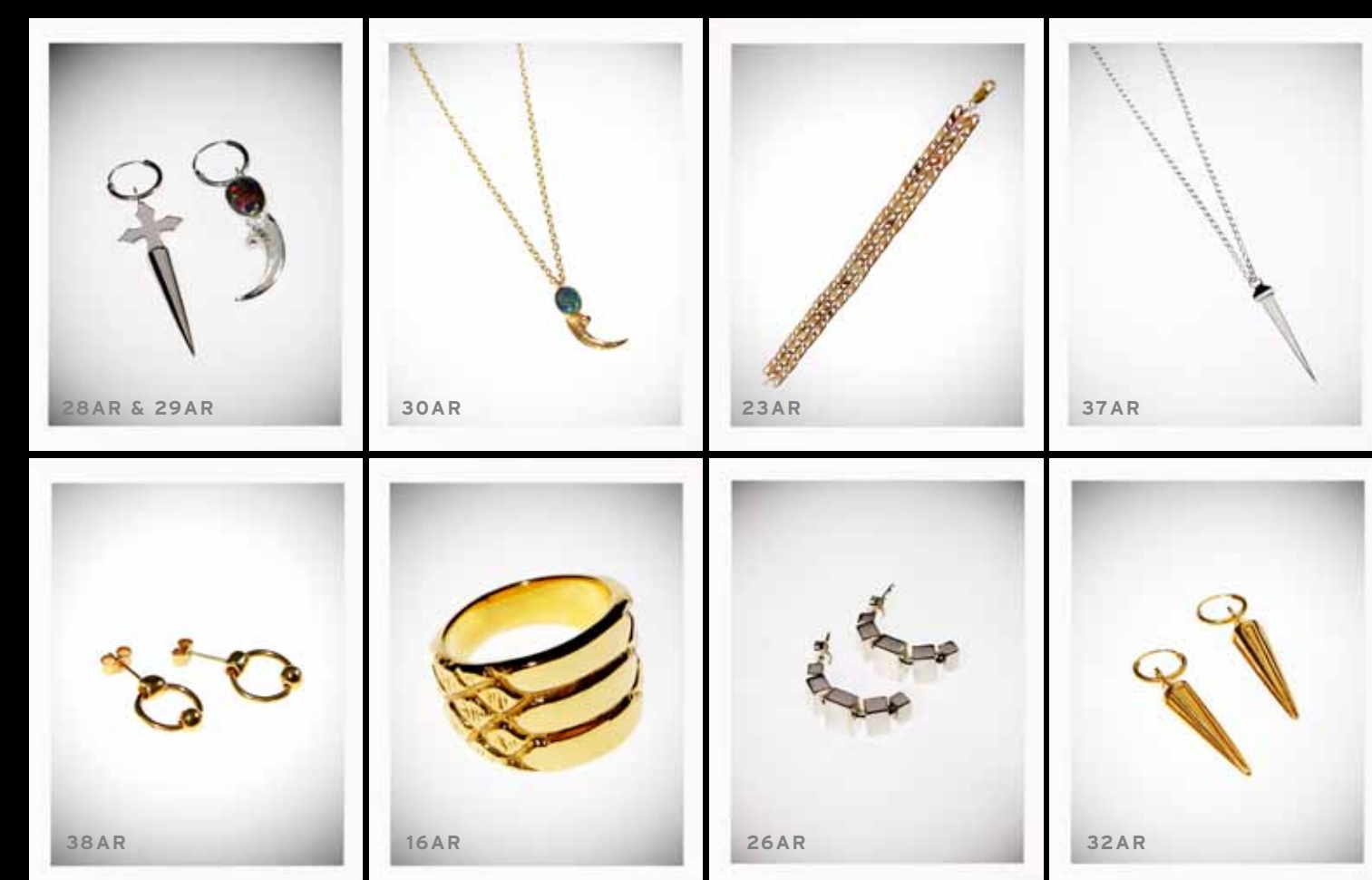
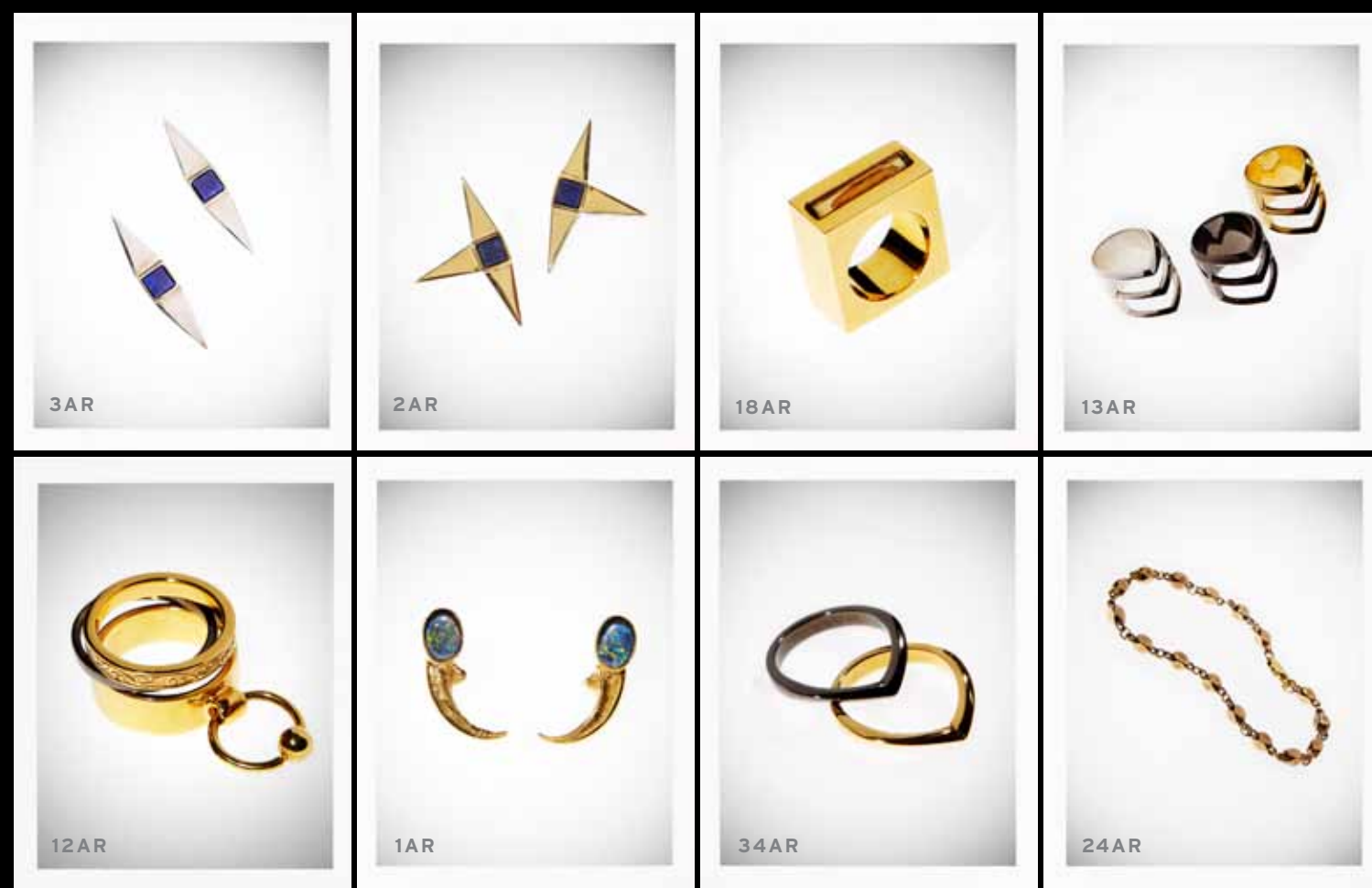
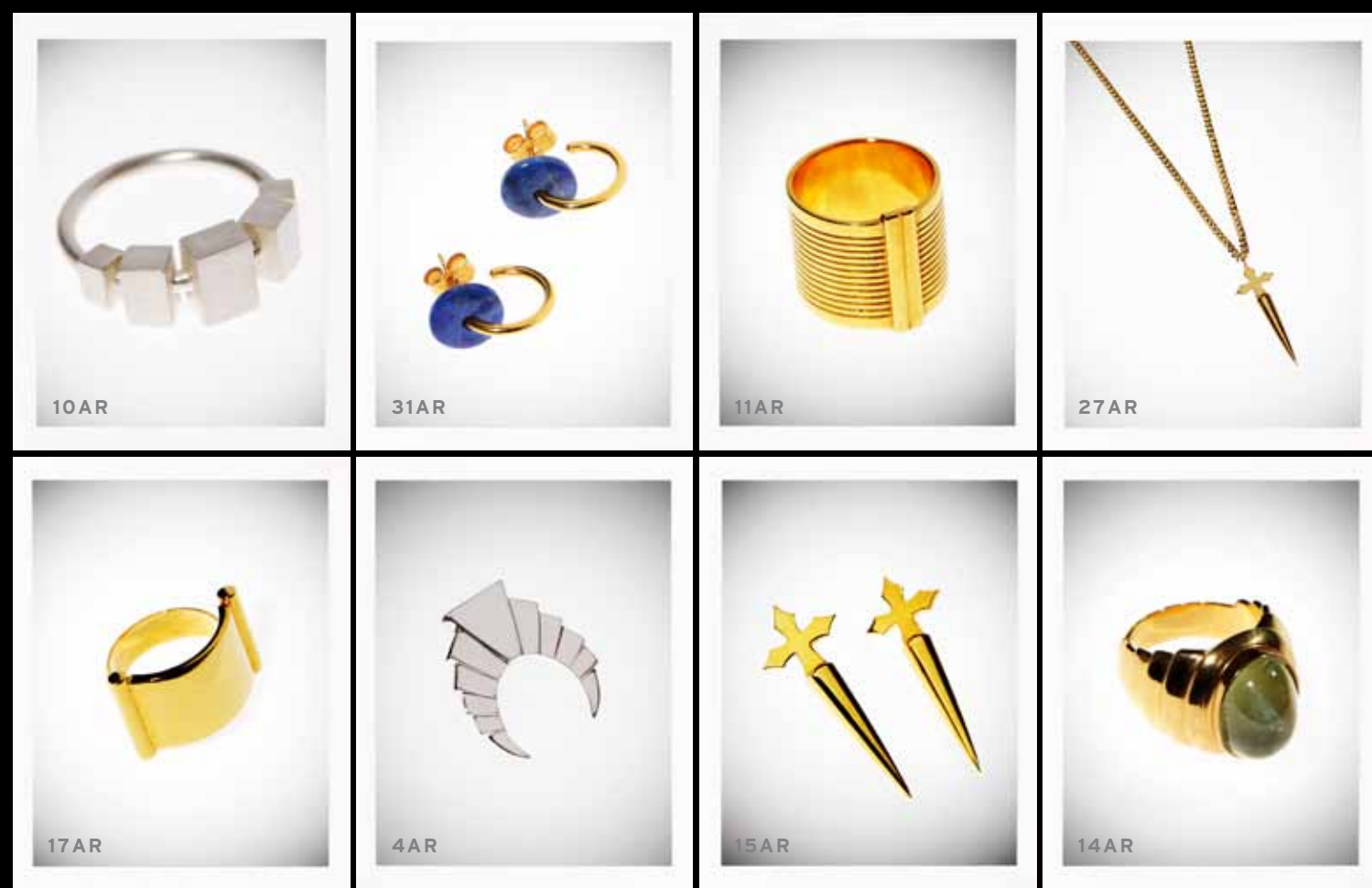
JEWELLRY COLLECTION 2013



HANNAH WARNER



PHOTOGRAPHER: DEAN DODOS, MODEL: MILA DE WIT, CREATIVE DIRECTOR: JAMES TIMMINS, GRAPHIC DESIGNER: MICHAEL VISCONTI



This new collection from Hannah Warner retains her distinct use of contrast between the sharpness of lines and the softness of shapes as well as the repetition of angles. As with previous collections, Hannah focuses on forms that are inspired by the architecture of New York City, specifically the skyscrapers and the ornate details of the urban buildings in London and NYC as well as accelerated from Italy. This time, however, she looks more closely at smooth surfaces rather than textured. As always, stones are incorporated, albeit to a lesser extent than previous collections. This restraint benefits these pieces and heightens the drama. Therefore, a more simplified look reflects the spectacular feel of the architecture and results in a more refined and mature collection.